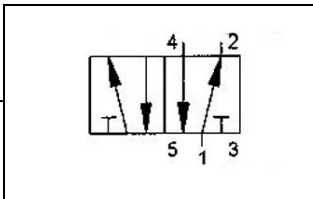
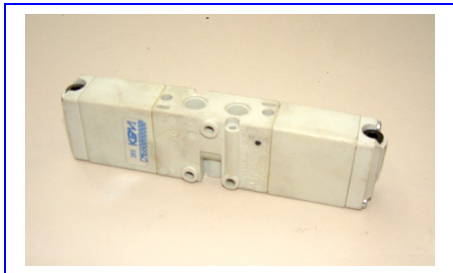




VALVOLA PNEUMATICA MANUALE  
 COMANDO A LEVA  
**5/2 VIE ATT. 1-8"**  
 MANUAL PNEUMATIC VALVE  
 DRIVE TO LEVER  
**5/2 CONN ATT. 1-8"**  
 VANNE PNEUMATIQUE MANUELLE  
 COMAND. PAR TIGE  
**5/2 CONN ATT. 1-8"**

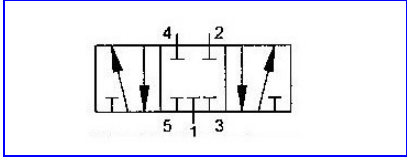


Cod. 173.158



VALVOLA PNEUMATICA **5/3 VIE ATT. 1-8" - 3 posiz. Doppio Comado**  
 VALVE PNEUMATIC **5/3 CONN. ATT. 1-8" - 3 posit. Double Drive**  
 VANNE PNEUMATIQUE **5/3 CONN. ATT. 1-8" - 3 posit. Double Comm.de**

Cod. 173.103



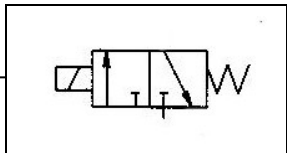
Cod. 173.234



ELETTROVALVOLA PNEUMATICA **5/3 VIE ATT. 1-8"**  
 ELECTRIC-VALVE PNEUMATIC **5/3 CONN. ATT. 1-8"**  
 ELECTROVANNE PNEUMATIQUE **5/3 CONN. ATT. 1-8"**



ELETTROVALVOLA PILOTA  
 PNEUMATIC VALVE PILOT  
 VANNE PNEUMATIQUE PILOTE  
**1 / 8"**



Cod. 173.55



KIT VALVOLA PNEUMAT. + ELETTROVALVOLA PNEUMAT.  
 KIT PNEUMATIC-VALVE + PNEUMATIC ELECTRIC.VALVE  
 KIT VANNE PNEUMAT. + ELECTROVANNE PNEUMAT.  
**5 / 2 - 1/8"**

Cod. 173.92



KPM	24 v	Cod. 173.160
VESTA	24 v	Cod. 173.212
UNIVER / P.I	24 v	Cod. 173.213

230v	Cod. 173.52
230v	Cod. 173.214
230v	Cod. 173.215

